



ANDREA OLIVAZZO LIGHT SCULPTURES

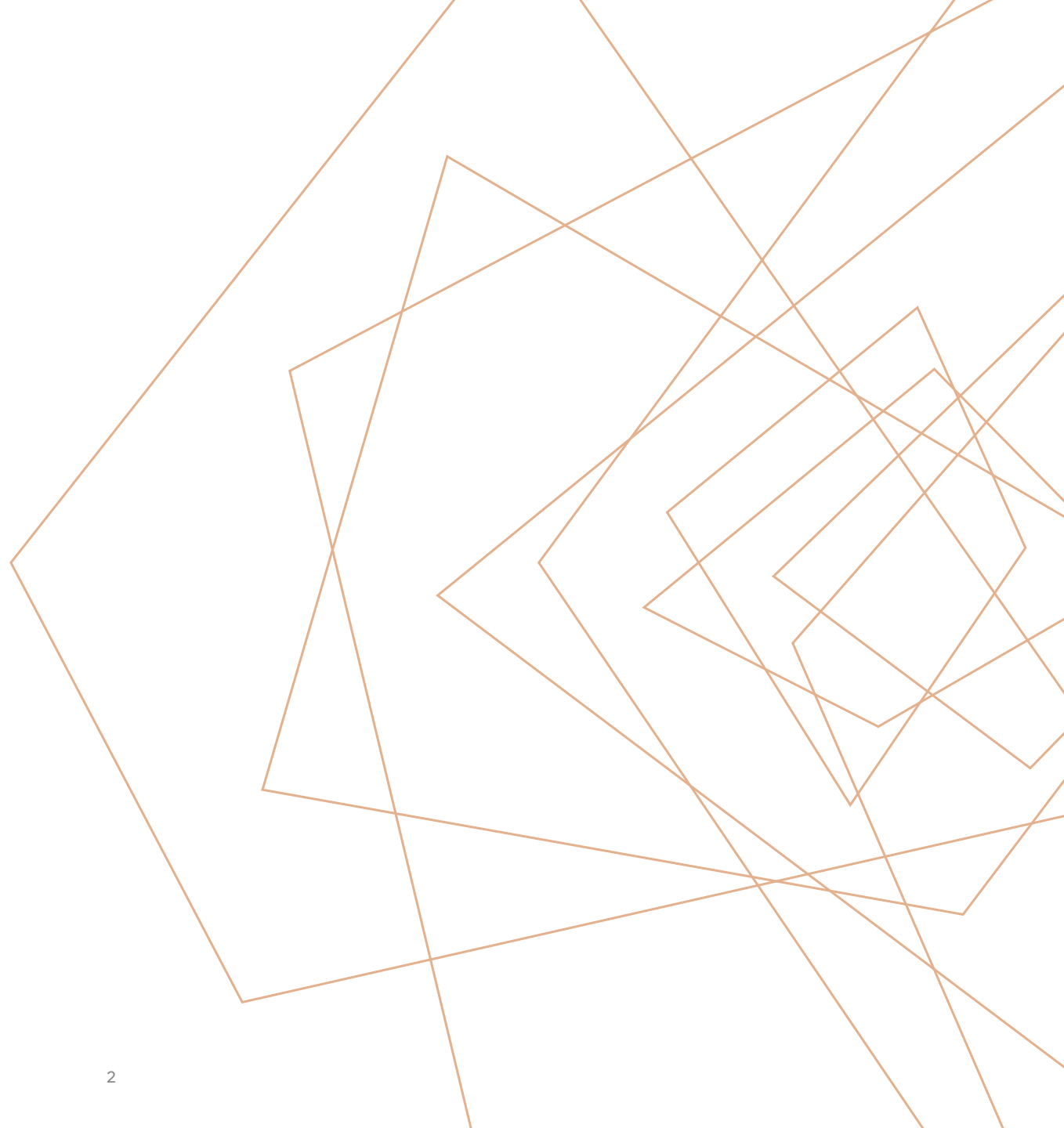
Handcrafted lamps designed and made in Italy

WHERE CRAFT MEETS LIGHT

My Light Sculptures are bespoke objects born to fill homes, offices, and spaces with captivating plays of light and reflection.

Each piece begins as a hand drawn sketch, a single pencil line that becomes the soul of the work. From there, I develop the structural framework of the sculpture, overseeing every stage of construction by hand: shaping metal with care, precision, and balance.

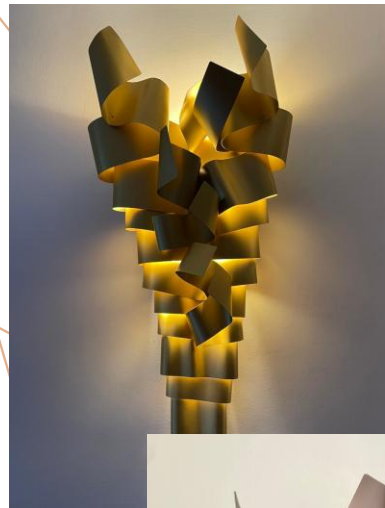
Each Light Sculpture emerges from the meeting of a client's vision and my own creative imagination. Entirely bespoke. Entirely unrepeatable.



THE STUDIO

My small and beloved workshop, where almost every Light Sculpture is born. A place to think, to sketch, to build; always accompanied by music.





RAMPICANTE

The RAMPICANTE Light Sculpture is inspired by a climbing plant, growing upward in every direction from its base. A dynamic, organic form that animates any interior space with texture and moving shadow.

Every element is individually shaped by hand from aluminium before being assembled into the finished piece. Available in any colour, size and finish.

DIMENSIONS

Small	H 50 – 60 cm
Medium	H 100 – 120 cm
Big	H 140 – 160 cm
Super Big	H 250 – 300 cm

ROSETO

The ROSETO lamp is made of intertwined rose stems. These can include thinner aluminium strips, thin metal tubes, or even transparent rods. The irregular surface catches the light differently at every angle, giving the piece a jewel-like quality.

A statement piece for living rooms, hotel suites, or boutique interiors.

DIMENSIONS

Small 25 × 50 cm

Medium 40 × 80/85 cm

Big 40 × 100/110 cm





ROSETTA

ROSETTA is the most intimate piece in the collection, a small metallic bow that transforms any corner, shelf, or bedside table into something extraordinary.

Compact, delicate, and full of character. The ideal gift for lovers of design and light.

DIMENSIONS

Standard

35 x 35 cm

ONDA

ONDA captures the rhythm of ocean waves in metal. A slow, hypnotic form that brings movement and calm to any wall. The play of light across its surface shifts with every viewing angle, never exactly the same twice.

A meditation on the sea, made permanent.

DIMENSIONS

Standard

110 x 60 x 20 cm





PRIMAVERA

PRIMAVERA takes its form from a twisted metal flower. Petals of aluminium caught mid-bloom, casting intricate shadows that shift across the wall as light changes throughout the day.

A piece as sculptural as it is luminous. Equally at home on a domestic wall or in a commercial interior.

DIMENSIONS

Small	40 × 40 cm
Medium	60 × 60 cm
Big	80 × 80 cm



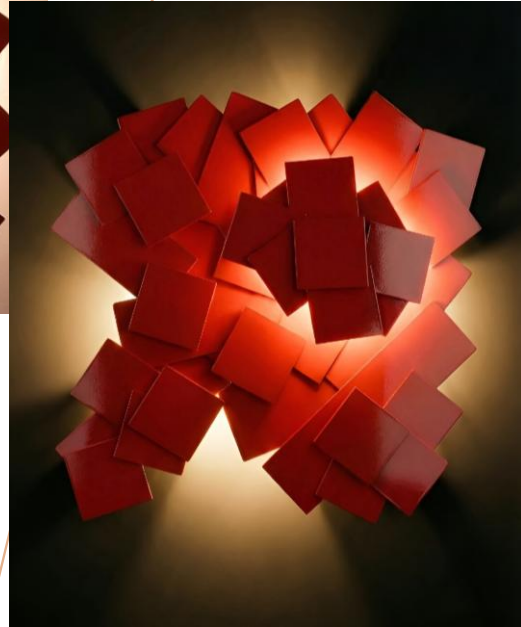
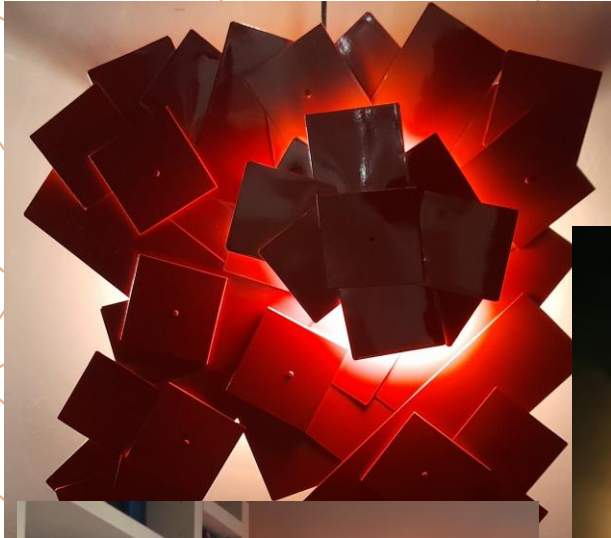
ESTATE

ESTATE, the summer companion to ONDA, distils the warmth and movement of a summer sea into a compact sculptural form. Light plays across its surface like sun on water at midday.

Where ONDA is contemplative, ESTATE is energetic: a piece full of heat and life.

DIMENSIONS

Standard 60 x 60 x 20 cm



AUTUNNO

To complete the series, AUTUNNO reimagines fallen autumn leaves as a collage of aluminium tiles.

The light emanates from behind the layers, creating radial illumination and sharp shadows from the corners of the dry leaves. The red or orange hues create a cozy atmosphere, perfect for dining or living areas.

DIMENSIONS

Standard 60 x 60 x 15 cm



INVERNO

INVERNO is inspired by ice forming on the still surface of a lake in winter: crystalline, geometric, and quietly breathtaking. Its angular planes catch light in sharp, defined reflections.

A piece of unexpected warmth in its subject matter's coldness.

DIMENSIONS

Standard

60 x 60 x 15 cm

SHANGHAI

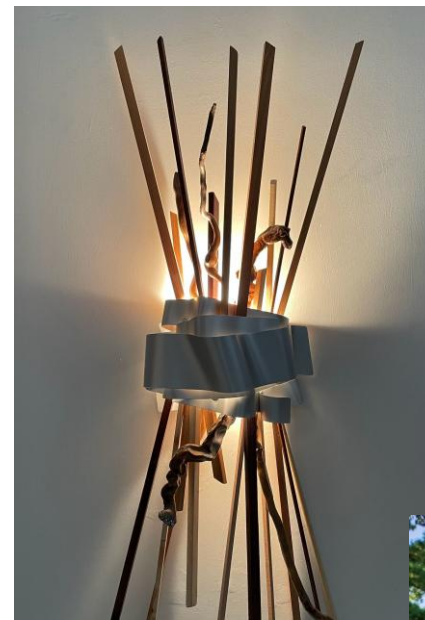
SHANGHAI draws from the classic game of wooden sticks, a composition of slender aluminium rods, seemingly cast at random but frozen in perfect sculptural balance.

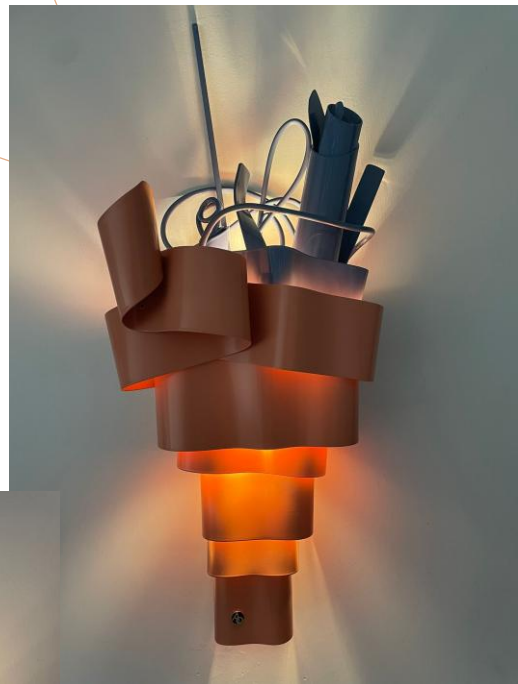
Available as a corner installation, wall installation, or standalone piece, it adapts to the architecture of the space rather than imposing upon it. It is also available for both indoors and outdoors.

DIMENSIONS

Standard 110 x 40 x 25 cm

Mega 300 x 70 x 70 cm





CUORE, BOUQUET & SKYLINE

These three lamps blend a small RAMPICANTE design with different elements of form and colour, including gold leaf and wood. The interplay of simplicity and chaos coming from withing gives the piece warmth as well as structure.

The shadows and colours projected by these variations each have a different effect on a mood and space. From the glamorous reflections from golden SKYLINE, to the intricate shadow play of CUORE, these similar yet different pieces each have something to add to a room.

DIMENSIONS

Standard

H 60 - 70 cm

ESPERIA

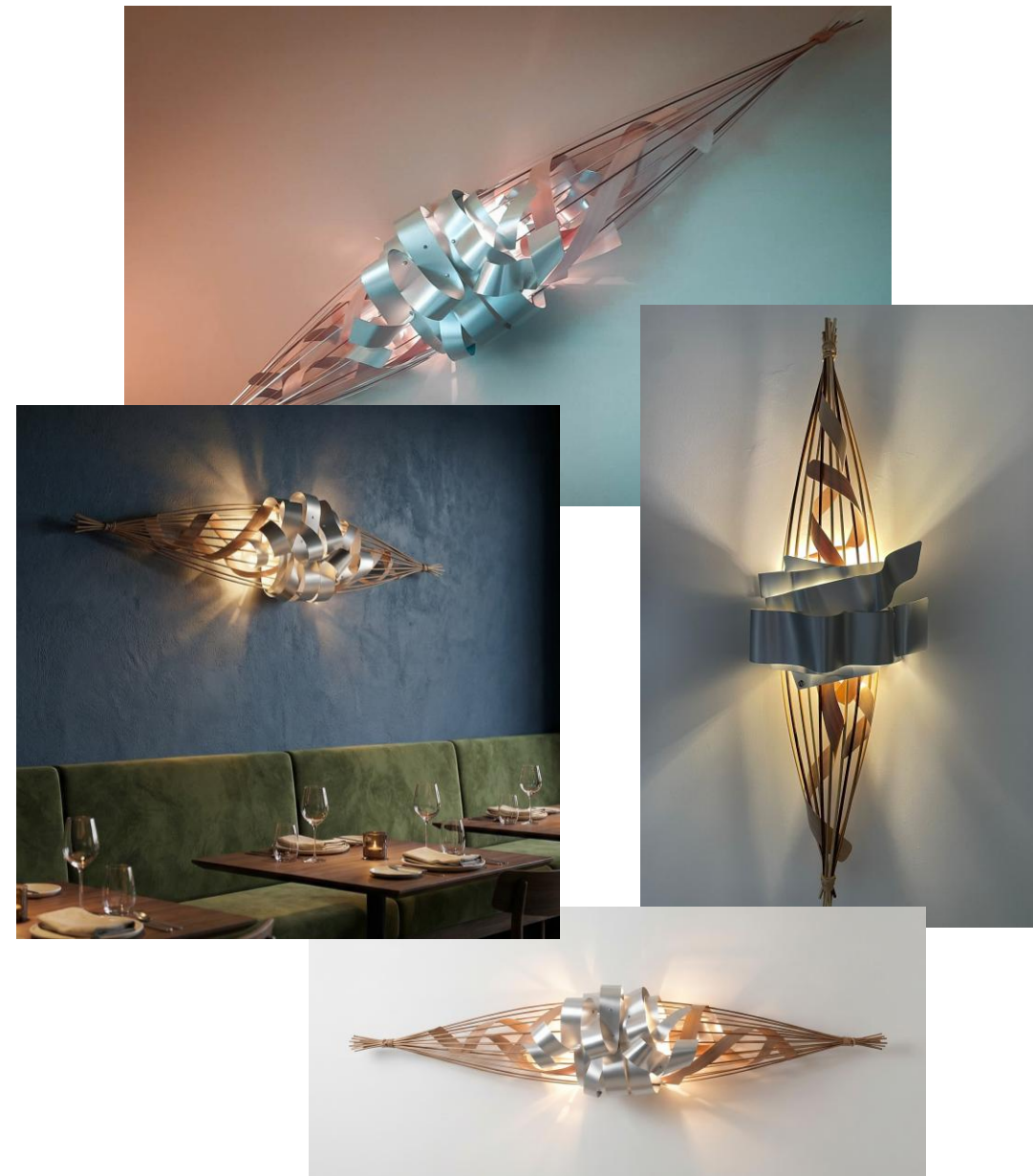
ESPERIA is modelled on the hull of a racing rowing shell: a long, elegant form that brings the refinement of sport and craft into the interior.

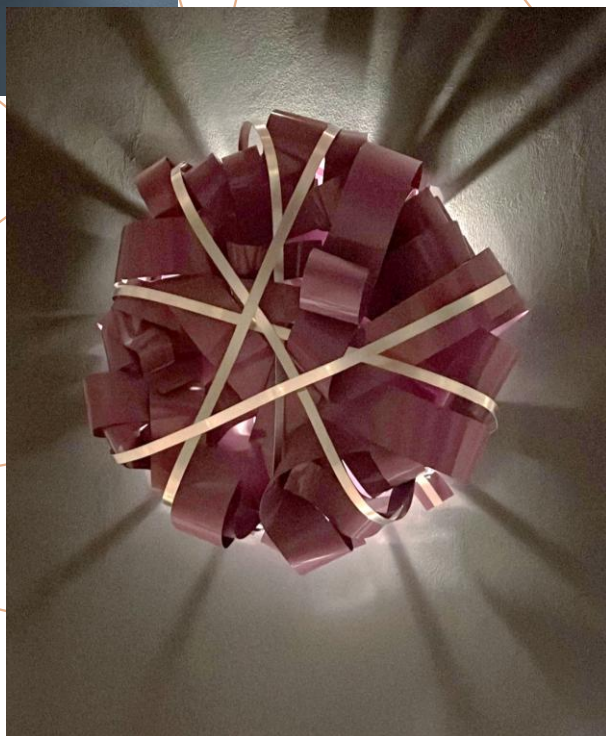
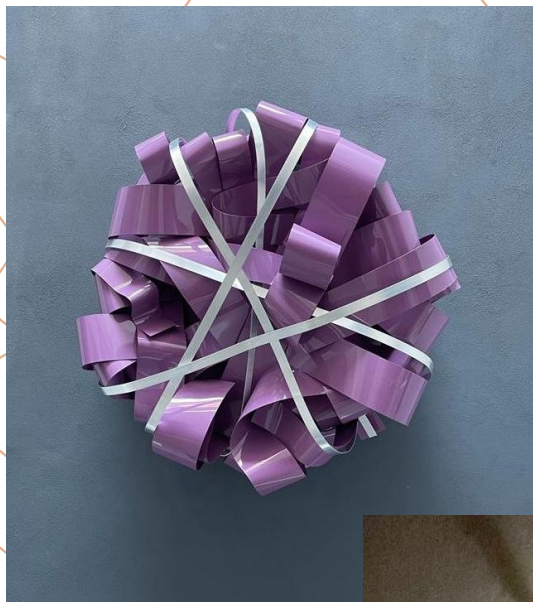
Available in two dramatically different scales: the intimate Small for domestic spaces, and the monumental Mega for hotels, restaurants, and large installations.

DIMENSIONS

Small 110 x 30 x 25 cm

Big 300 x 50 x 40 cm





MEGA ROSA

ROSA MEGA is a rose at monumental scale, 1.5 metres across, a full bloom in aluminium that becomes the undisputed centrepiece of any architectural space.

Breathtaking in both its delicacy and its scale. Designed for spaces that deserve something exceptional.

DIMENSIONS

Standard 150 x 150 cm

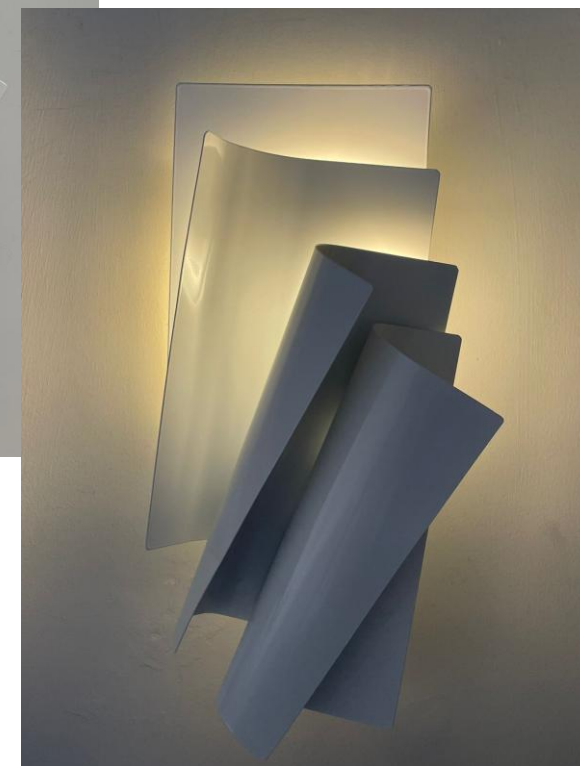
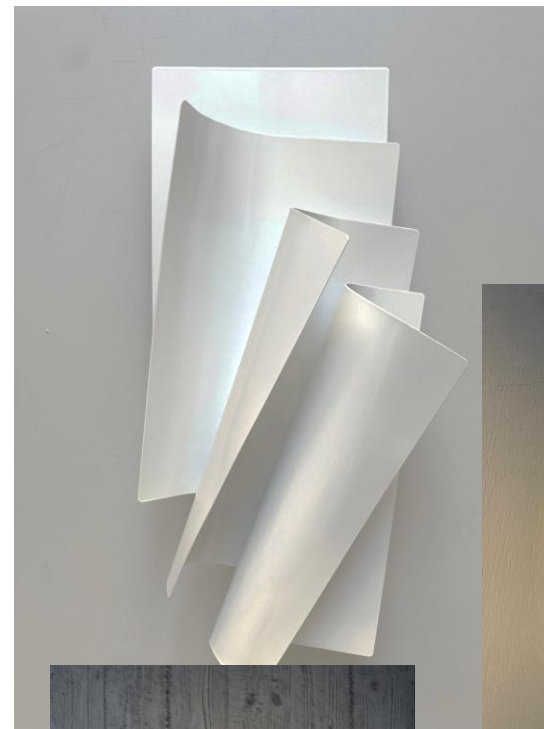
FOGLI

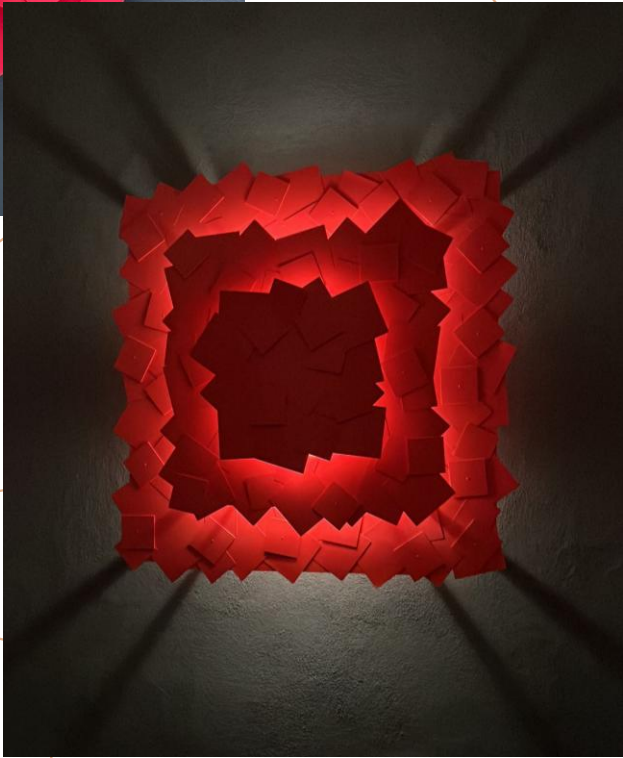
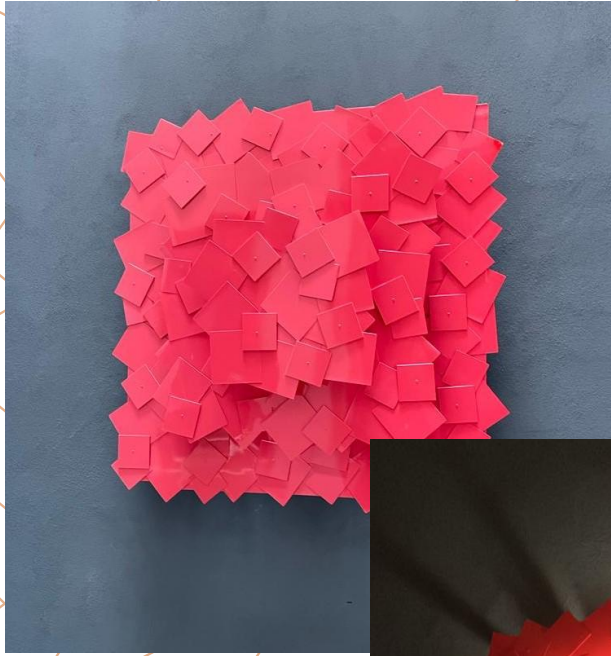
FOGLI imagines the falling of four overlapping sheets of paper, caught mid-air and rendered permanently in aluminium. A poetic pause in domestic space.

Minimal, graphic, and quietly surprising — the kind of piece that rewards closer inspection every time.

DIMENSIONS

Standard 50 x 25 x 15 cm





MOSAICO

MOSAICO reimagines the ancient Roman mosaic in anodised aluminium. Dozens of individual coloured tiles assembled into a vibrant, shimmering whole that transforms a wall into a work of art.

A piece that honours craft across the centuries, and fills any space with colour, texture, and light.

DIMENSIONS

Standard 150 x 150 cm

FUOCO

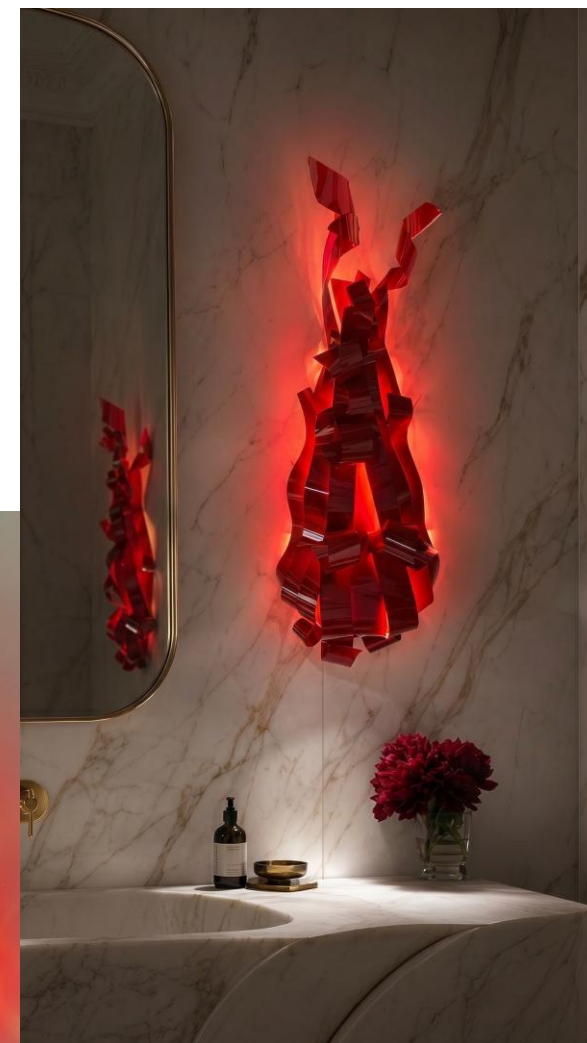
FUOCO freezes flame in metal, a column of anodised aluminium petals catching light from every angle, evoking the dynamic energy of fire in perfect, still form.

Tall and vertical, it works equally well as a floor piece or a dramatic wall installation.

DIMENSIONS

Standard

H 110 cm





**FINISHES &
COLOURS**

The piece receives a professional primer coat, followed by high-quality RAL powder coating in your chosen hue.

Final finishes are available in:

MATT



GLOSS



TEXTURED



SMOOTH



POWDER COAT FINISHING

Every Light Sculpture can be finished in any colour the client desires,
matched precisely to the space it will inhabit.



ANODISING

The anodising process transforms the aluminium surface at a molecular level, creating a finish of extraordinary depth and durability that cannot chip, flake, or peel.

Using specialist machinery and controlled chemical processes, the metal can be given brushed, lined, smooth, matt, or gloss surfaces, in any given colour.

Anodising is Andrea Olivazzo's signature finishing technique: it amplifies the natural beauty of the aluminium rather than concealing it.



LIGHTING & INSTALLATION

All Light Sculptures are supplied without a built-in light source, giving you complete freedom to choose the lighting that best suits your space and aesthetic.

The recommended approach is to mount the sculpture on a wall, with a light source positioned behind, using fixings appropriate to the piece's weight.

This separation of sculpture and light allows the shadows cast by the piece to become an integral part of the design, animating the surrounding wall and ceiling.

We are happy to advise on lighting solutions for each specific installation.



THANK YOU

Andrea Olivazzo

+39 3297366442

Ao.lightsculptures@gmail.com

andreaolivazzo.it